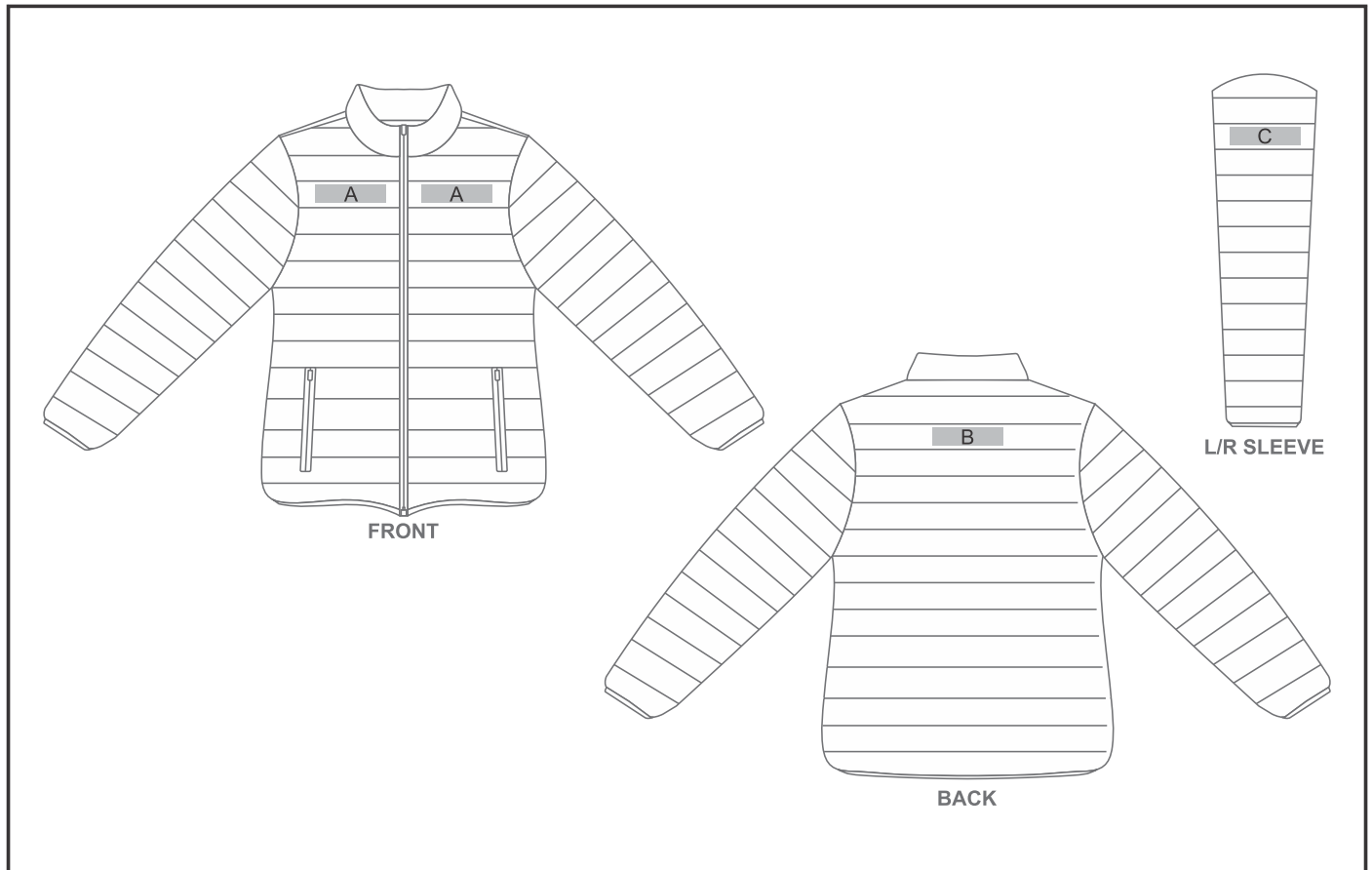


JC-EL-110-A

Ladies Utah Jacket



Need to know:

- Includes 1-Position Embroidery (setup fees apply)
- **EMB Inclusive Parameters: Left/Right Chest or Back = 100mm x 100mm**
- **Cannot guarantee a 100% straight branding on any clothing item with check or stripe detail.**
- **The panels on the garment are inconsistent from Small to XL.**
- **The logo will be branded in the closest left / right chest and back panel, to the standard left/right chest and back position.**

Branding Options:

Position A

1. Embroidery (EM-CLOTHING)
N/A
Size: 100mm wide x 35mm high

Position B

1. Embroidery (EM-CLOTHING)
N/A
Size: 200mm wide x 35mm high

Position C

1. Embroidery (EM-CLOTHING)
N/A
Size: 80mm wide x 30mm high